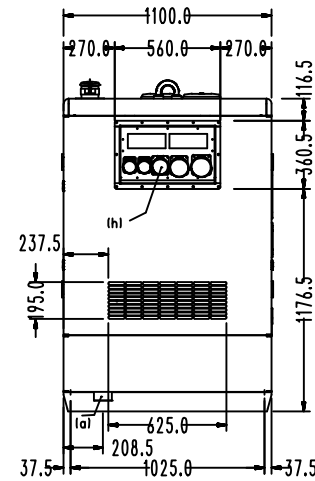
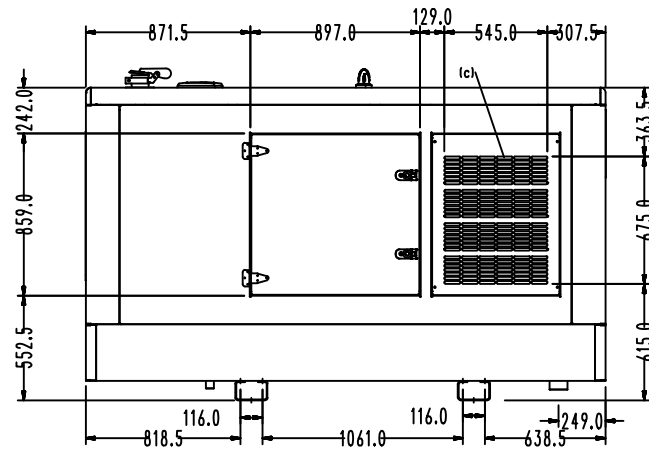
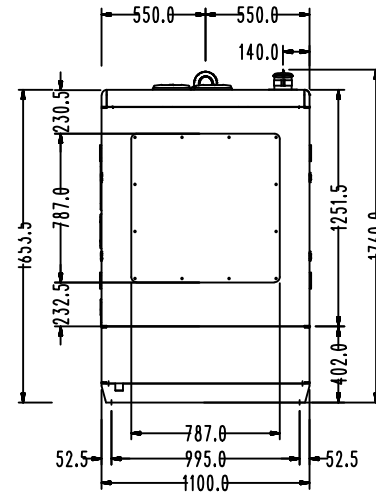
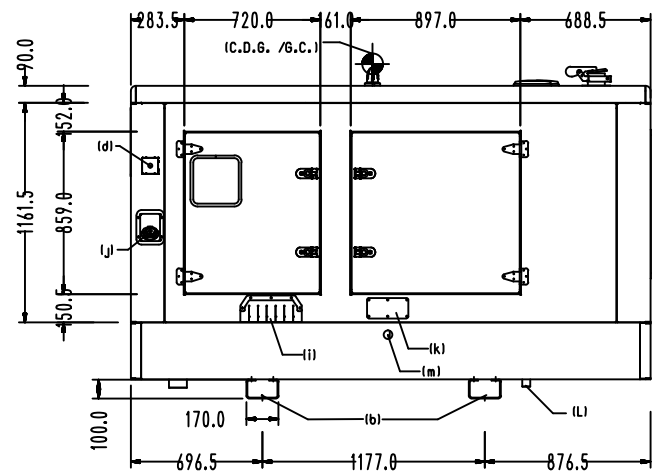
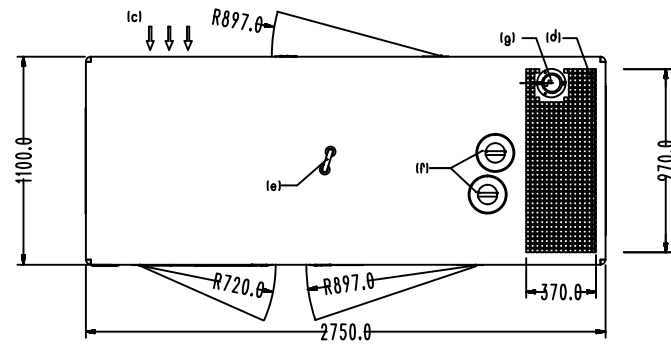
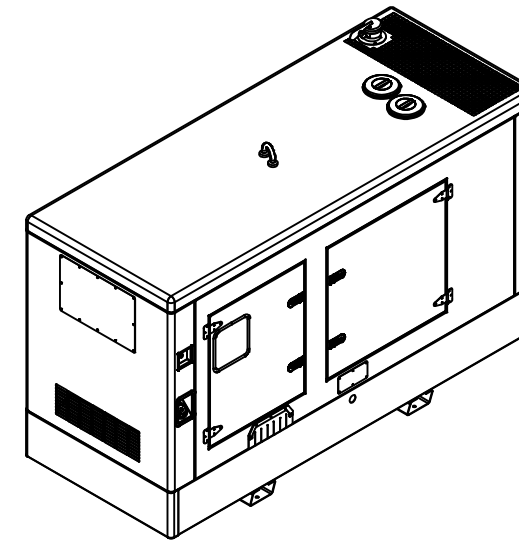
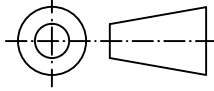


# 120 kVA



- (a) Access to drain
- (b) Mounting on floor (4x  $\varnothing 16$  mm)
- (c) Air inlet
- (d) Air outlet
- (e) Lifting point
- (f) Radiator access
- (g) Exhaust outlet  $\varnothing 90$  mm
- (h) Power sockets
- (i) Cable gland
- (j) External fuel supply
- (k) External fuel supply connections 3 way manifold (optional)
- (l) Access to drain
- (m) Oil drain



|   |  |                       |   |
|---|--|-----------------------|---|
| RUWHEID VOLGENS<br>NEN 3634   | ISO-PASSINGSTELSEL<br>NEN-ISO 286-1 EN-2 |                       | VORM- EN PLAASTOLERANTIES<br>VOLGENS NEN-ISO 1101 |
| AMERIKAANSE PROJECTIE   | SCHAAL: 1:40                             | GETEKEND: DJ          | OPMERKINGEN:                                      |
|  | MAATEENHEID: MM                          | AFDELING: Engineering |   |
|   | DATUM: 24-09-2012                        | GEZIEN:               |   |
| BRINKMANN & NIEMEIJER<br>MOTOREN BV   |  | BENAMING:<br>G116QX   | TEK.NR.:<br>C151057 <sup>A</sup>                  |
|   |  |                       | FORMAAT:<br>A3                                    |