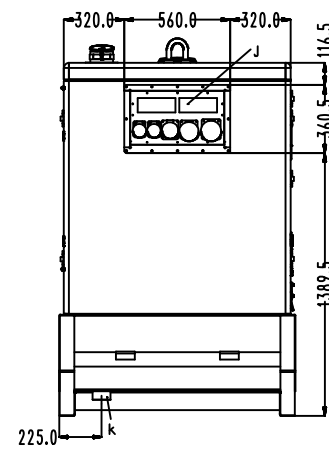
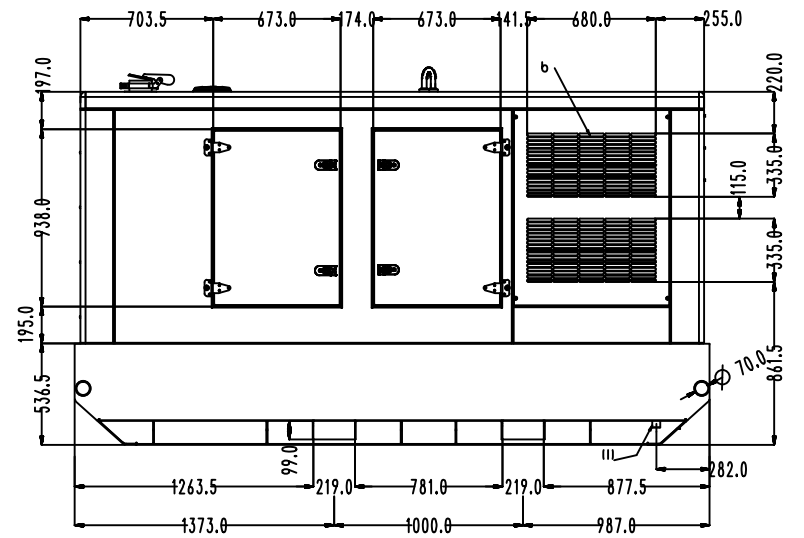
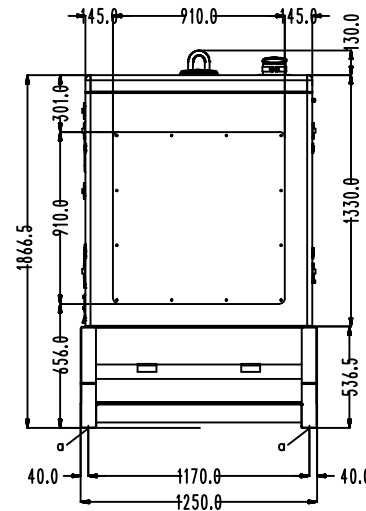
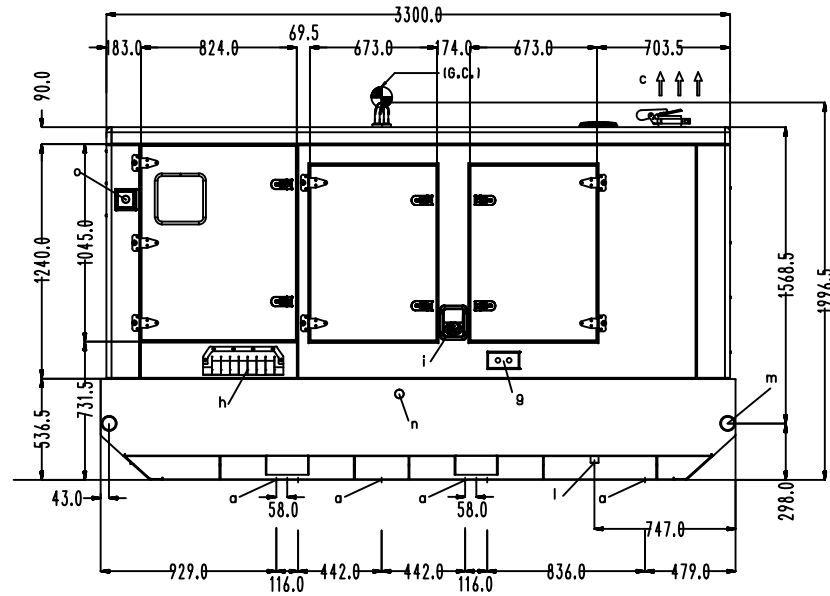
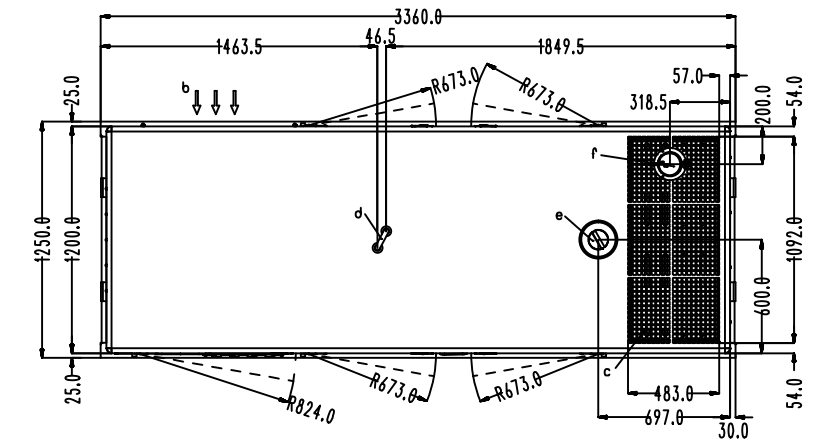


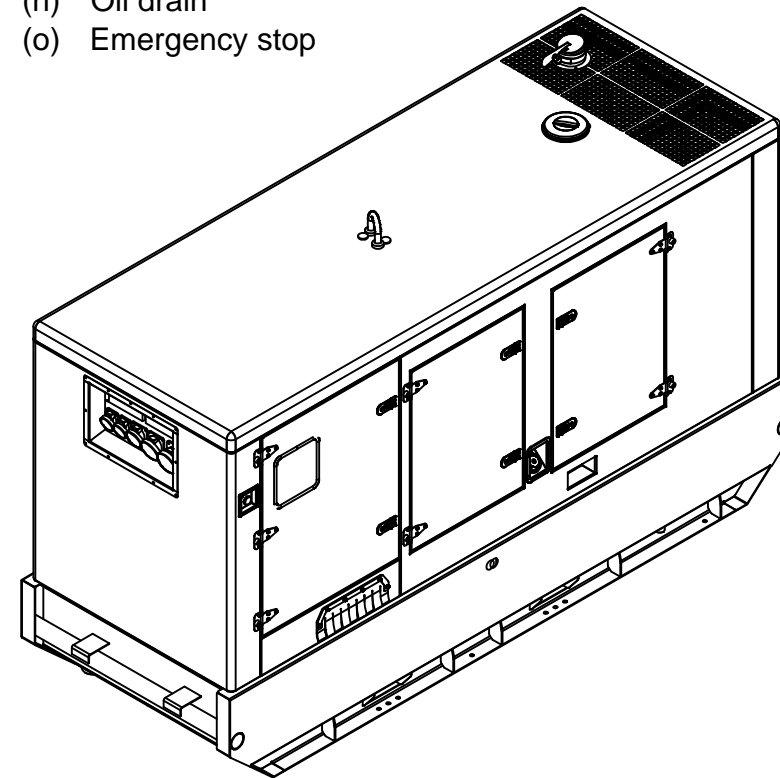
Copyright and ownership of this drawing is vested in Brinkmann & Niemeijer Motoren B.V., whose prior written consent is required for its use, reproduction or for publication to any third party. All other rights reserved.

Changings reserved

160 kVA



- (a) Mounting on floor (16x ø18mm)
- (b) Air inlet
- (c) Air outlet
- (d) Lifting point
- (e) Radiator access
- (f) Exhaust outlet ø 120 mm
- (g) External fuel supply connections 3 way manifold (optional)
- (h) Cable gland
- (i) External fuel filling
- (j) Receptacle box
- (k) Access to drain
- (l) Drain base frame
- (m) Sledging skid
- (n) Oil drain
- (o) Emergency stop



Deze tekening blijft eigendom van Brinkmann & Niemeijer Motoren B.V. en mag zonder haar schriftelijke toestemming niet gecopieerd worden of aan derden ter inzage worden gegeven. Alle overige rechten voorbehouden.

Wijzigingen voorbehouden

Iveco NEF67 TM3A

RUWHEID VOLGENS NEN 3634	ISO-PASSINGSTELSEL NEN-ISO 286-1 EN-2	VORM- EN PLAATSTOLERANTIES VOLGENS NEN-ISO 1101	
AMERIKAANSE PROJECTIE	SCHAAL: 1:40	GETEKEND: DJ	OPMERKINGEN:
	MAATEENHEID: MM	AFDELING: Engineering	
	DATUM: 20-01-2010	GEZIEN:	
BRINKMANN & NIEMEIJER MOTOREN BV	BENAMING: G160RX	TEK.NR.: C151099^A	FORMAAT: A3